

## Manor Park Road, London, NW10 4JR

### Guide Price £300,000 Leasehold



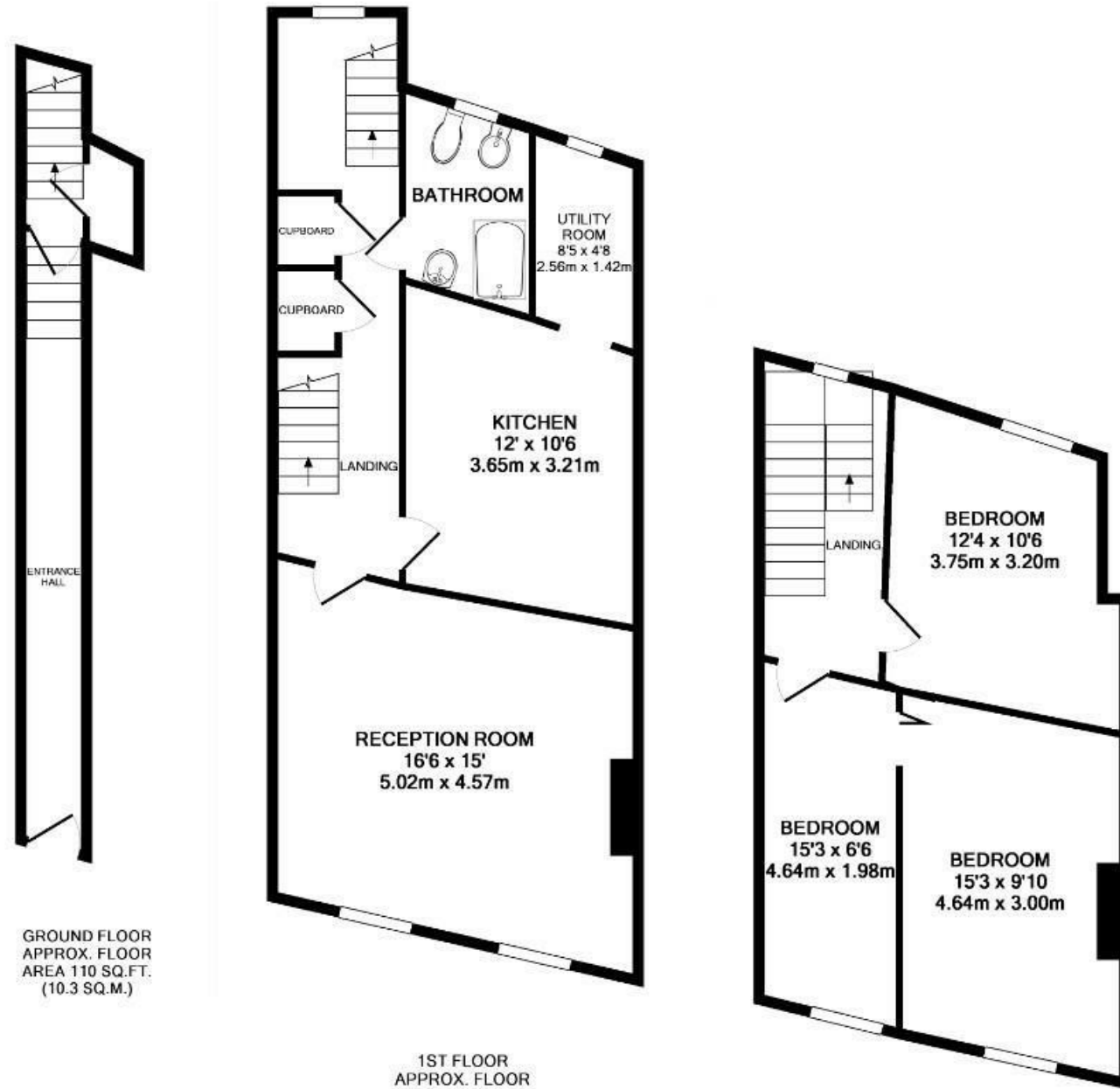
Whilst every effort is made to give a fair description, the accuracy of these particulars is not guaranteed, neither do they constitute an offer or contract.

**MATHESONS ESTATE AGENTS** have not tested any apparatus, equipment, fitting or services and so cannot verify that they are in working order. The buyer is advised to obtain verification from their solicitor or surveyor. Measurements are correct to within +/- 6 A sonic tape is used. None of the statements contained in these particulars or any of our properties are to be relied upon as a representation of fact.

#### KEY FEATURES:

- Three bed Investment
- Huge potential
- Must be seen
- Prime location
- Updating Required.
- Short lease
- Priced to sell
- No Chain

A fantastic three double bedroom bedroom apartment which although in need of modernization offers tremendous development potential. The property is ideal for Investors as the property is in an area with huge expected development and is offered with no onward chain.



MANOR PARK ROAD, LONDON, NW10 4JR  
TOTAL APPROX. FLOOR AREA 1146 SQ.FT. (106.4 SQ.M.)  
Measurements are approximate. Not to scale. Illustrative purposes only  
Made with Metropix ©2018

2ND FLOOR  
APPROX. FLOOR AREA 438 SQ.FT. (40.7 SQ.M.)